

FCNef for Precision Psychiatry

Paving the way for precision treatment of psychiatric symptoms with functional connectivity neurofeedback

Taylor JE^{1*†}, Oka T^{1,2†}, Murakami M¹, Motegi T^{1,3}, Yamada T^{1,4,5}, Kawashima T⁶, Kobayashi Y⁶, Yoshihara Y⁶, Miyata J^{6,7}, Murai T⁶, Kawato M¹, & Cortese A¹.

¹ The Department of Decoded Neurofeedback, Computational Neuroscience Laboratories, Advanced Telecommunications Research Institute International, Kyoto, Japan

² The Department of Clinical Psychology, Graduate School of Human Sciences, Osaka University, Suita, Japan

³ Saint-Pierre Hospital, Takasaki, Japan

⁴ Division of Developmental Neuroscience, United Graduate School of Child Development, Osaka University, 2-2 Yamadaoka, Suita, Osaka, 565-0871, Japan

⁵ Medical Institute of Developmental Disabilities Research, Showa University, Tokyo, Japan

⁶ Department of Psychiatry, Graduate School of Medicine, Kyoto University, Kyoto, Japan

⁷ Department of Psychiatry, Aichi Medical University, Aichi, Japan

* correspondence: jessie.elizabeth.taylor@gmail.com

† Dr. Taylor and Dr. Oka contributed to this work equally.

Short Title: FCNef for Precision Psychiatry

Corresponding Author: Jessica Elizabeth Taylor

E-mail address: jessie.elizabeth.taylor@gmail.com

Keywords: Precision psychiatry, real-time fMRI neurofeedback, Major Depressive Disorder, Rumination

Abstract

Introduction: Major depressive disorder (MDD) remains challenging to treat, with many patients failing to respond adequately to existing therapies. Patients with MDD have heterogeneous subsets of symptoms with differing underlying neural aberrations. Treatment response may improve if treatments become more individualised. We recently showed preliminary evidence that normalisation of a neural network and a corresponding reduction in related symptoms can be achieved using a Brain Machine Interface (BMI) called real-time fMRI functional connectivity neurofeedback (FCNef). However, the robustness of this effect, and the best FCNef parameters for optimising therapeutic outcomes remained unknown. **Methods:** We ran additional participants, with a final dataset of $N = 68$, in our FCNef protocol. Functional connectivity between the dorsolateral prefrontal cortex (DLPFC) and posterior cingulate cortex/precuneus (PCC) was targeted with the goal of reducing brooding rumination symptoms. Core FCNef parameters (experimental schedule and reward) were manipulated between participants. **Results:** We replicated findings that normalisation of DLPFC-PCC connectivity with FCNef correlates significantly with reductions in brooding rumination, but not with changes in anxiety, which is associated with different neural circuits. The difference between these correlations was significant, highlighting the precision of this effect. Finally, we found that successful DLPFC-PCC normalisation and corresponding changes in brooding rumination depended on specific FCNef parameters. The most effective protocol involved consecutive training days with greater external reward. **Conclusions:** These results highlight the potential of FCNef for precision medicine in psychiatry and underscore the importance of optimising parameters to enhance feasibility of BMI-based clinical interventions.

1. Introduction

The World Health Organization estimates that major depressive disorders will become the top cause of global disease burden by 2030 [1]. Of patients who do receive treatment, an estimated 30-50% do not respond fully [2,3]. Patients with the same clinical diagnosis can have heterogeneous subsets of symptoms that relate to different underlying neural mechanisms [4]. Nonetheless, they usually receive relatively homogenous treatment. For example, all or most clinical practice guidelines recommend selective serotonin reuptake inhibitors as first-line treatment for depression [5]. To improve response rates, individual differences clearly need to be considered. Future treatment may become more individualised using Brain-Machine Interfaces (BMIs) to identify and target underlying patient neural aberrations. However, medical regulatory approval presents serious challenges to this [6]. To date, only a handful of BMIs have received approval from local medical regulatory agencies for human trials [7–9], and even fewer have received full market authorisation [10,11]. A key step toward approval of a given BMI technique by regulatory agencies is demonstrating the optimality of chosen parameters. Here, we extend previous results to better examine the robustness of a promising form of BMI called Functional-Connectivity Neurofeedback (FCNef) [12], and to systematically investigate a specific set of its parameters.

FCNef is a functional magnetic resonance imaging (fMRI) neurofeedback technique in which participants receive real-time feedback about the current state of functional connectivity between targeted brain regions (measured as the correlation between time-courses of BOLD activity from these regions). This feedback is used to train participants to make a targeted functional connection more positive or negative, a result that has been demonstrated in multiple studies [12–19]. Showing promise for precision medicine, recent FCNef studies have reported precise correspondence between normalisation of functional connections and reductions in specifically related symptoms [12,17,18,20]. Consistent with these results, we previously found that normalisation of functional connectivity between the dorsolateral prefrontal cortex (DLPFC) and the precuneus/posterior cingulate cortex (PCC) that occurred with FCNef was related to reductions in brooding rumination, but not anxiety symptoms. Importantly, these effects persisted at least 1-2 months after FCNef [12]. Nonetheless these results were reported from only a small sample. We have since continued to collect data and here we examine the robustness of these effects by testing for their replication in the newly collected data. Furthermore, because combining the new and old data provides sufficient statistical power to properly compare correlation coefficients, for the first time, we are able to directly examine the specificity of this effect.

FCNef for Precision Psychiatry

Given its potential use as a medical tool, FCNef should maximise health outcomes while minimising patient burden. Here, we operationalised FCNef success as the normalisation of DLPFC/PCC functional connectivity and a related reduction in brooding (but not anxiety) symptoms. We sought to find parameters that would best enhance this, while also keeping participant fatigue to a minimum (because preliminary testing in a clinical sample caused fatigue-related drop-out of one out of six patients [21]). To accomplish our objective, we focused on the following parameters: (1) Reward schedule: During real-time neurofeedback tasks, feedback has conventionally been provided simply as scores that reflect how similar the induced brain activity is to the target brain activity [22–24]. However, recent evidence suggests that target neural activity may be better reinforced during neurofeedback when external reward, such as money, is also used [25]. Here, we manipulated how bonus money was assigned to feedback scores so that different groups of participants could earn less/more overall external reward. (2) Experimental schedule. Most FCNef studies [15], including our own [12,19], have required participants to come in for multiple consecutive days of experimentation. This can be exhausting and requires motivation and organisation skills that can be diminished in psychiatric disorders [26]. Therefore, we tested whether a more flexible schedule, over non-consecutive days, could yield similar results to the consecutive training schedule.

Overall, we ran 68 participants in our FCNef for depression paradigm while manipulating reward schedule (low/high) and experimental schedule (consecutive/non-consecutive training days). Our goals were twofold: (1) using a larger sample size to examine the robustness of our previously reported results and more precisely examine the specificity of the FCNef effect, and (2) to fine-tune underlying parameters.

2. Methods

2.1. Participants

Participants were screened twice using the Beck Depression Inventory-II (BDI) questionnaire [27] (see Supplementary Methods for more detail). Only those with an average score ≥ 8 , who indicated no intention of committing suicide, who spoke Japanese, who held no current clinical diagnosis, and who were not currently receiving treatment for a psychiatric illness were invited to participate. Overall, 69 people passed the screening and participated in the main experiment. However, experimental data of one participant was subsequently excluded from data analysis because it was revealed, subsequent to experimentation, that that subject held a current clinical diagnosis. Of the 68 participants whose data were

FCNef for Precision Psychiatry

used for analyses, the average BDI score over the two screening measurements was 14.33, with a standard deviation (STD) of 5.26. This puts them generally in the category of “mild depression” [27]. For this reason and because these participants lacked current clinical diagnoses, we considered them “subclinical”.

2.2. Experimental Conditions

We wished to examine the overall success of our paradigm and to determine whether it is influenced by reward and experimental schedules. However, due to financial and time constraints (it takes 10 days of experimentation to screen and run just one participant in this paradigm), we could only run participants in three experimental groups: those with consecutive days of experimentation and a high-reward schedule (hereafter, “Consec/High-Rew”), those with consecutive days of experimentation and a low-reward schedule (hereafter, “Consec/Low-Rew”), and those with non-consecutive days of experimentation and a low-reward schedule (hereafter, “Non-Consec/Low-Rew”) (see Table 1 for sample size details). Participants in the three groups did not differ significantly in baseline levels of our main measures of interest: (1) DLPFC-PCC resting-state functional-connectivity (rs-FC), (2) BDI scores, and (3) brooding scores (measured on a subscale of the Rumination Response Scale [28,29]) (see Supplementary Table 7). However, we found that baseline anxiety levels (measured with the trait anxiety subscale of the State-Trait Anxiety Inventory [30]) differed significantly between the Consec/Low-Rew and Non-Consec/Low-Rew groups (see Supplementary Table 7). This is unlikely to have had a large impact on results because: (a) the rs-FC we targeted is not thought to relate to anxiety, and (b) results showed that differences in FCNef success were not greatest between these two groups (as can be seen further down).

Participant group assignments were determined by concurrent availability of participants, experimenters, and MR machine facilities. This allocation method reflects real-world constraints in neuroimaging research, though we acknowledge it could have introduced potential self-selection effects. To address possible allocation bias, we conducted analyses to compare baseline demographic measurements between groups (age, sex): No meaningful differences were found (see Supplementary Results). It should be noted that data of 19 participants (9/21 from the Consec/High-Rew group and 10/23 from the Consec/Low-Rew group) have been reported elsewhere [12]. Further details about recruitment, participant demographics, and payment can be found in the Supplementary Methods.

FCNef for Precision Psychiatry

Group	Main Experiment Sample Size	1-Month Follow- up Sample Size	2-Month Follow- up Sample Size
Consec/High-Rew	21	11	9
Consec/Low-Rew	23	20	17
Non/Low-Rew	24	22	20
Total	68	53	46

Table 1. Sample sizes for three groups of participants.

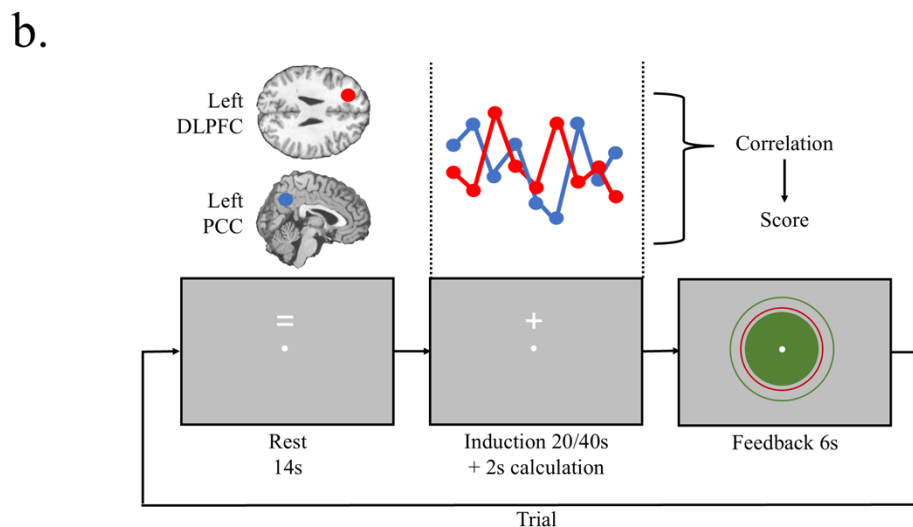
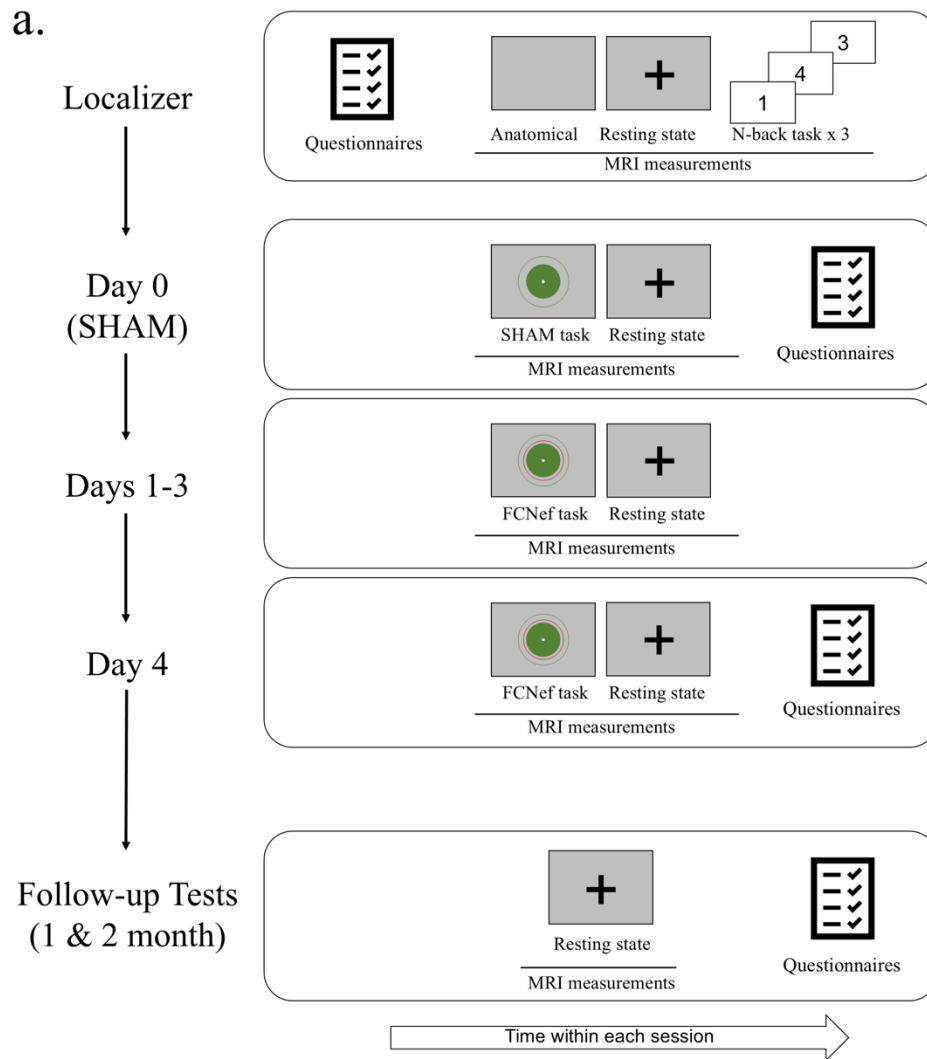
This table shows the sample sizes for: (1) participants run in consecutive days of FCNef with the high-reward schedule (the “Consec/High-Rew group”), (2) those run in consecutive days of FCNef with the low-reward schedule (the “Consec/Low-Rew group”), and (3) those run over non-consecutive days of FCNef with the low-reward schedule (the “Non-Consec/Low-Rew group”). No participants were run over non-consecutive days of FCNef with the high-reward schedule (no “Non-Consec/High-Rew” group). Sample sizes are shown for the main experiment and for one- and two-month follow-up tests. There were fewer participants for the follow-up tests for the Consec/High-Rew group because the long-term tests were not included in the earliest stages of this experiment, so only 12 participants from this group were invited back.

2.3. Experimental procedure, materials, and imaging data acquisition

An outline of the experimental procedure is shown in Figure 1 alongside details of the FCNef task. These were largely the same as in our previous report [12], except for specific experimental conditions of interest. These experimental conditions are described in the sub-section below entitled “Differences in experimental conditions.” The protocol and imaging data acquisition details are identical to those in our previous report [12] and are summarised in the Supplementary Methods.

Details of the symptom questionnaires can be found in the Supplementary Methods, but overall general depressive symptoms were measured with the BDI [27]. Brooding rumination symptoms were measured with a subscale of the Rumination Response Scale (RRS) [28,29], and trait anxiety symptoms were measured with the trait anxiety subscale of the State-Trait Anxiety Inventory (STAI-Y2) [30]. As can be seen in Figure 1, because there would be limited clinical meaning, these symptom questionnaire scores were not measured on all days of the main experiment. Instead, they were only measured on the first day (Day 0) and last day (Day 4) of the main experiment and during one- and two-month follow-up tests.

FCNef for Precision Psychiatry



FCNef for Precision Psychiatry

Figure 1. Experimental procedure and example FCNef trial.

a. The order of events on each day of experimentation. Questionnaires = the Beck Depression Inventory-II [27], the Rumination Response Scale [28], and the State-Trait Anxiety Inventory [30]. Anatomical = T1-weighted structural MRI. N-back = a well-known executive control task [54], used here as a functional localiser[12]. **b. An example FCNef trial.** During the rest period, participants were to simply relax. During the induction period, they were asked to “somehow” manipulate their brain activity to get the best possible feedback. Participants were told that different strategies of brain activity manipulation might work for different people. Unbeknown to participants (nothing changed on screen), there was a 2s calculation period at the end of the induction period. During FCNef, DLPFC-PCC connectivity (from the induction period) was calculated during the calculation period and this determined the feedback presented during the feedback period. During SHAM, however, feedback was just random. Feedback was presented on screen as a green circle and participants had been clearly instructed that the larger this was, the more monetary reward they would receive on that trial. During FCNef, they were instructed to try to make the green circle bigger than the red circle that was also presented on screen. The circumference of this red circle represented the participant's baseline DLPFC-PCC connectivity (the average from SHAM). During SHAM, there was no red circle and participants were simply instructed to try to make the green circle as big as possible. Modified with permission from Taylor et al. (2022)[12].

2.4. Differences in experimental conditions

The following parameters were manipulated, such that some participants were run under conditions different from those reported in our previous papers [12,19].

2.4.1. Reward schedule:

All participants received a baseline reward bonus of ¥500 on each day of the SHAM and FCNef sessions. This is the maximum reward they could receive in the SHAM task, but they could get an additional reward bonus in the FCNef task depending on their average FCNef scores from that day. Importantly, two calculation methods were used to determine this additional reward bonus. Participants in the low-reward schedule conditions could achieve an additional reward bonus of ¥100 for each average FCNef score point over 75. Instead, participants in the high-reward schedule condition could achieve an additional reward bonus of ¥50 for each average FCNef score point over 50. See Supplementary Table 2 for specific examples. The way in which scores were calculated in the SHAM and FCNef tasks was identical across conditions. This was the same method as in our previous report [12] and is described in the Supplementary Methods.

FCNef for Precision Psychiatry

2.4.2. Experimental schedule:

Two groups of participants completed Days 0-4 over 5 consecutive days (Monday-Friday). The third group completed Days 0-4 over 5 non-consecutive days, which took place over a period of several weeks to months (mean of 18.5 days \pm STD of 15.3 days).

2.4.3. Induction time-window:

Consistent with earlier versions of our FCNef for depression paradigm [12,19], about half of the participants from each group completed FCNef and SHAM with a 40 sec induction time-window (see Supplementary Table 1). Because re-analysis of pilot data suggested it would not affect results (see Supplementary Results, Supplementary Table 3, and Supplementary Figure 1), the other half of participants completed FCNef and SHAM with a 20 sec induction time-window. We included this manipulation with the goal of improving our paradigm. Using a 20 sec time-window reduces the overall experiment by about 10 mins each day, which could be crucial for patients who tire easily. Indeed, when we checked the data of our three groups of participants, we found that our measure of FCNef success did not change in any meaningful way that depended on the induction time-window (see Supplementary Results and Supplementary Tables 4-6). Therefore, in the main text of this report, we did not split the data by induction time-window because (a) it is hard to draw strong conclusions about null effects, and (b) splitting the data further like this would make sample sizes in each cell even smaller, making it hard to draw conclusions about other parameters of interest.

2.5. Data analyses

2.5.1. Correlations to extend previously reported results

We previously reported correlations between rs-FC and symptom changes using data from 19 participants who were run over consecutive days of FCNef [12]. Ten of these participants were run with the high-reward schedule and the other nine were run with the low-reward schedule, but overall their combined data showed promising results. Since then, we have collected data from 25 more participants under the same experimental conditions (consecutive days of FCNef with low/high-reward schedules), which gives us an overall dataset with 44 participants run under these conditions (see Table 1). Note that this does not include the data of the Non-Consec/Low-Rew group, which has also been collected since our previous report. This is because this group was run with a different experimental parameter to our previous report (non-consecutive days of experimentation) and so its data cannot contribute directly to our replication test. One goal of collecting this additional data was to assess the robustness of previously

FCNef for Precision Psychiatry

reported results in a larger dataset. Before doing this in the 44 participants, however, we first re-ran relevant correlations using only data of the additional 25 participants to ensure that we were not introducing bias by adding new data to the existing pool. After this test, we then re-ran the previously reported correlations with the larger pooled dataset. To check the adequacy of the sample size for statistical tests, we conducted post-hoc power analyses with G*Power version 3.1.9.7 (Franz Faul, Kiel University, Germany). The significance threshold was set at $\alpha = 0.05$, and we input relevant correlational values to calculate statistical power.

2.5.2. Linear Mixed Effect (LME) models to examine parameters of interest

We ran multiple LME models to examine how multiple measures related to FCNef success were impacted by our manipulated parameters (see Table 2). Dependent variables (DVs) in these models were taken from the task (e.g. average task score) or from the resting-state scans (e.g. changes in resting-state functional connectivity from before to after FCNef). All 3 groups of participants ($N = 68$) were included in these analyses so we could best examine parameters of interest.

We were unable to run a Non/High-Rew group (see Table 1). This means we could not run full factorial analyses to investigate all possible interactions between parameters that we manipulated, although we had no reason to expect interactions anyway. Instead, in all models reported here, we included “Group” as a categorical Independent Variable (IV) with 3 levels. By nature, this type of analysis compares the variance related to the second two levels with the variance related to the first level (the reference), so it is important to consider what data will be input at what level. Here, we decided to set the Consec/High-Rew group as the first level because this group had parameters that we used in the initial pilot experiment [19] and we wanted to examine whether changes to these initial parameters would improve or worsen FCNef success.

In addition to Group, the LME models also included other relevant IVs, which differed between models depending on the DV. In models examining how brain changes predicted symptom changes, this was changes in resting-state functional connectivity from before to after FCNef. In other models, this was the relevant experimental days.

For each DV, to explore the data, we ran LME models with and without the interaction term between IVs. We then tested these against one another to see which best fit the data.

No interaction term: $DV \sim X + Group + (1|Subject)$

With interaction term: $DV \sim X * Group + (1|Subject)$

FCNef for Precision Psychiatry

Likelihood ratio tests were used to compare models with and without interaction terms for all DVs. If there was a significant difference between models, the best-fit model was always selected based on the lowest Akaike Information Criterion (AIC, a measure of goodness of fit, which can be used to assess a model's relative quality [31]). If there was no significant difference between models then the simplest model, that without interaction, was selected as best-fit. Detailed information about the best-fit of each of these pairs of models can be found in tables in the Supplementary Results (Supplementary Tables 8, 9, 11-17, 19-24), with all significant main effects and interactions from the best-fit models additionally being reported in the Results Section below.

2.5.3. Follow-up statistical testing

Significant main effects and interactions from the best-fit models, as well as effects that we had specific hypotheses about, were followed up with t-tests or correlations. We applied False Discovery Rate (FDR) correction [32] whenever there were multiple comparisons. We had strong directional hypotheses that symptoms would decrease from before to after FCNef and that rs-FC would become more negative, aligning with patterns observed in healthy individuals. Therefore, we conducted the related t-tests using a one-tailed approach. Similarly, based on our strong directional hypothesis that symptoms would decrease as rs-FC became more negative (indicating a positive correlation between changes in symptoms and changes in rs-FC), we also used a one-tailed approach for the related correlation analyses.

3. Results

3.1. Extension of past results

3.1.1. Previously reported data

In our previous publication [12], we reported correlations between rs-FC and symptom changes using combined data of 9 participants from the current Consec/High-Rew group and 10 participants from the current Consec/Low-Rew group. We found a significant positive relationship between general depression change and rs-FC change ($r = 0.78$, $p_{FDR} = 0.0001$, 95% CI [0.51, 0.91]) and between brooding change and rs-FC change ($r = 0.43$, $p_{FDR} = 0.048$, 95% CI [-0.27, 0.74]), but a non-significant negative relationship between anxiety change and rs-FC change ($r = 0.11$, $p_{FDR} = 0.32$, 95% CI [-0.36, 0.54]) (note that we previously only reported correlation coefficients and uncorrected p -values). Because we specifically hypothesised that changes in DLPFC-PCC rs-FC from before to after FCNef should relate to changes in brooding but not anxiety symptoms, here we calculated Z-tests to compare these correlation coefficients [33]. These were run with one tail due to our directional hypothesis, and no significant

FCNef for Precision Psychiatry

difference was found ($z = 0.88$, $p = 0.16$). A post-hoc power analysis was conducted using correlation coefficients used for this Z-test ($r = 0.43$ and $r = 0.11$) and the coefficient for the correlation between brooding and anxiety changes ($r = -0.03$). This revealed a post-hoc power of 0.25, suggesting that the sample size ($N = 19$) was statistically insufficient to detect an effect of this magnitude.

3.1.2. Newly collected data

We have since collected more data for each of these groups (12 more participants for the Consec/High-Rew group and 13 more participants for the Consec/Low-Rew group) with the goal of testing robustness of the aforementioned findings in a larger dataset. To ensure that we were not adding bias or overestimating effects, before testing results for the pooled larger dataset, we first ran a replication test using just the newly collected data ($N = 25$). Consistent with the aforementioned results, we found a positive relationship between general depression change and rs-FC change ($r = 0.26$, $p_{FDR} = 0.16$, 95% CI [-0.16, 0.60]) and between brooding change and rs-FC change ($r = 0.40$, $p_{FDR} = 0.08$, 95% CI [-0.01, 0.69]), although these did not reach significance here. We found a non-significant negative relationship between anxiety change and rs-FC change ($r = -0.17$, $p_{FDR} = 0.80$, 95% CI [-0.53, 0.24]).

3.1.3. Pooled data

Overall, we consider the previously reported effects to be replicated in the newly collected data because confidence intervals overlapped and effect sizes were comparable. When we next pooled these data (total $N = 44$) we found a significant correlation between general depression change and rs-FC change ($r = 0.48$, $p_{FDR} = 0.002$, 95% CI [0.21, 0.68]), and between brooding change and rs-FC change ($r = 0.42$, $p_{FDR} = 0.004$; 95% CI [0.13, 0.64]), but not between anxiety change and rs-FC change ($r = -0.03$, $p_{FDR} = 0.57$; 95% CI [-0.32, 0.27]). Demonstrating the specificity achieved when targeting the DLPFC/PCC functional connection, we found a significant difference between coefficients from brooding change/rs-FC change and anxiety change/rs-FC change correlations ($z = 2.15$, $p = 0.016$) (see Figure 2). A post-hoc power analysis was conducted using correlation coefficients employed in this Z-test ($r = 0.42$ and $r = -0.03$) and the coefficient for the correlation between brooding and anxiety changes ($r = 0.23$). This revealed a power of 0.79, suggesting that the sample size ($N = 44$) was sufficient to detect an effect of this magnitude with high probability.

FCNef for Precision Psychiatry

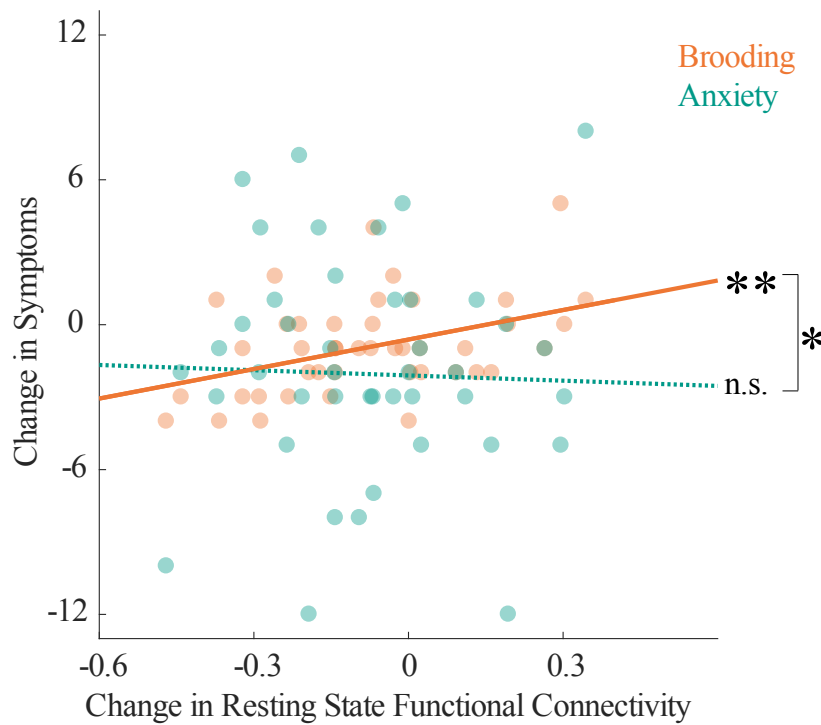


Figure 2. Comparison of rs-FC/Brooding and rs-FC/anxiety correlations

Promising for precision medicine, changes in DLPFC-PCC resting state functional connectivity (rs-FC) from before to after FCNef were significantly correlated with changes in brooding, but not anxiety symptoms. Pooling participants from consecutive conditions (to be consistent with conditions used in our previous report) provided us with the statistical power to compare these correlation coefficients. The significant difference found, highlights the precision of FCNef targeting this functional connection. Note that this same data, but split by condition, is presented again in Figure 5a and 5b. ** = $p_{FDR} < 0.01$, * = $p < 0.05$.

FCNef for Precision Psychiatry

3.2. Parameter Investigations

Analyses	Formulae	IVs			AICs	
		DV	IV1	IV2	Random Intercept	+ x
FCNef Scores	Mean FCNef Score	~ FCNef Day	+ or x	Group	+ (1 Subject)	2109.2 2108.7
	STD FCNef Score	~ FCNef Day	+ or x	Group	+ (1 Subject)	1599.8 1593
Symptoms	General Depressive Scores	~ first/last FCNef Day	+ or x	Group	+ (1 Subject)	776.72 779.13
	Brooding Scores	~ first/last FCNef Day	+ or x	Group	+ (1 Subject)	681.4 682.68
	Anxiety Scores	~ first/last FCNef Day	+ or x	Group	+ (1 Subject)	913.86 914.62
	General Depressive Score Changes (D4, 1M, 2M)	~ Post-Day	+ or x	Group	+ (1 Subject)	926.03 925.45
	Brooding Score Changes (D4, 1M, 2M)	~ Post-Day	+ or x	Group	+ (1 Subject)	766.01 769.92
	Anxiety Score Changes (D4, 1M, 2M)	~ Post-Day	+ or x	Group	+ (1 Subject)	1095.7 1095
rs-FC	rs-FC	~ first/last FCNef Day	+ or x	Group	+ (1 Subject)	-22.99 -23.67
	rs-FC Changes (D4, 1M, 2M)	~ Post-Day	+ or x	Group	+ (1 Subject)	-58.77 -55.47
Symptom Change/ rs-FC Change Relationship	General Depressive Score Changes (D4)	~ rs-FC Change	+ or x	Group	+ (1 Subject)	316.57 -153.29
	Brooding Score Changes (D4)	~ rs-FC Change	+ or x	Group	+ (1 Subject)	287.8 287.52
	Anxiety Score Changes (D4)	~ rs-FC Change	+ or x	Group	+ (1 Subject)	408.46 410.45

Table 2. The models used to examine dependent variables from the FCNef experiment.

Models with and without interactions between independent variables (IVs) were compared to see which would best predict each dependent variable (DV). Akaike Information Criteria (AIC) are displayed in columns labelled '+' (for models without interactions) and 'x' (for models with interactions). These are highlighted in bold in cases in which likelihood ratio testing showed the corresponding model to be significantly better fit than the alternative model. If there was no significant difference, then the model without the interaction was selected as best-fit because it was the simplest. FCNef Day = Days 1-4; Subject = experimental participant; STD = standard deviation; First/last FCNef Day = Days 0 and 4; Post-Day = Day 4, and the 1- and 2-month follow-up test days; Changes = data from the day indicated in brackets (e.g. D4) minus data from Day 0; rs-FC = resting state functional connectivity between the DLPFC-PCC.

3.2.1. FCNef scores

In the total dataset (N = 68), while comparing groups, we first examined whether mean FCNef scores increased significantly across training days, because this would indicate that participants successfully modified the target functional connection in the trained direction. Additionally, we assessed whether variance in FCNef scores decreased significantly across training days, because this would indicate that participants had gained better control of the DLPFC-PCC functional connection.

The best-fit LME model to predict means of average daily FCNef scores was the model with no interaction (Table 2 and Supplementary Table 8). This model showed a significant main effect of FCNef day ($p = 0.0009$). In short, mean scores increased over training days (see Figure 3), which indicates that

FCNef for Precision Psychiatry

participants could do the task. There was also a significant effect of the Non-Consec/Low-Rew group ($p = 0.046$): Overall scores were lower for this group than for the reference Consec/High-Rew group (see Figure 3a), who were the only group capable of raising their scores significantly above baseline.

The best-fit model to explain variance in FCNef scores did include the interaction term (see Table 2 and Supplementary Table 9). This model showed a significant main effect of FCNef day ($p < 0.0001$), which was qualified by a significant interaction between the Non-Consec/Low-Rew group and FCNef day ($p = 0.001$). This interaction indicates that changes in FCNef score variance over FCNef days did not follow the same trajectory for the Non-Consec/Low-Rew group as it did for the reference Consec/Low-Rew group; As can be seen in Figure 3b- the variance decreased over days for the reference group, but not for the Non-Consec/Low-Rew group. No such significant interaction was found between the Consec/Low-Rew group and FCNef Day ($p = 0.11$), which indicates that the Consec/Low-Rew group's trajectory did not differ from that of the reference group. Indeed, the data for the Consec/Low-Rew group lay between that of the other two groups, showing a trend for a decrease in variance over days (see Figure 3b).

FCNef for Precision Psychiatry

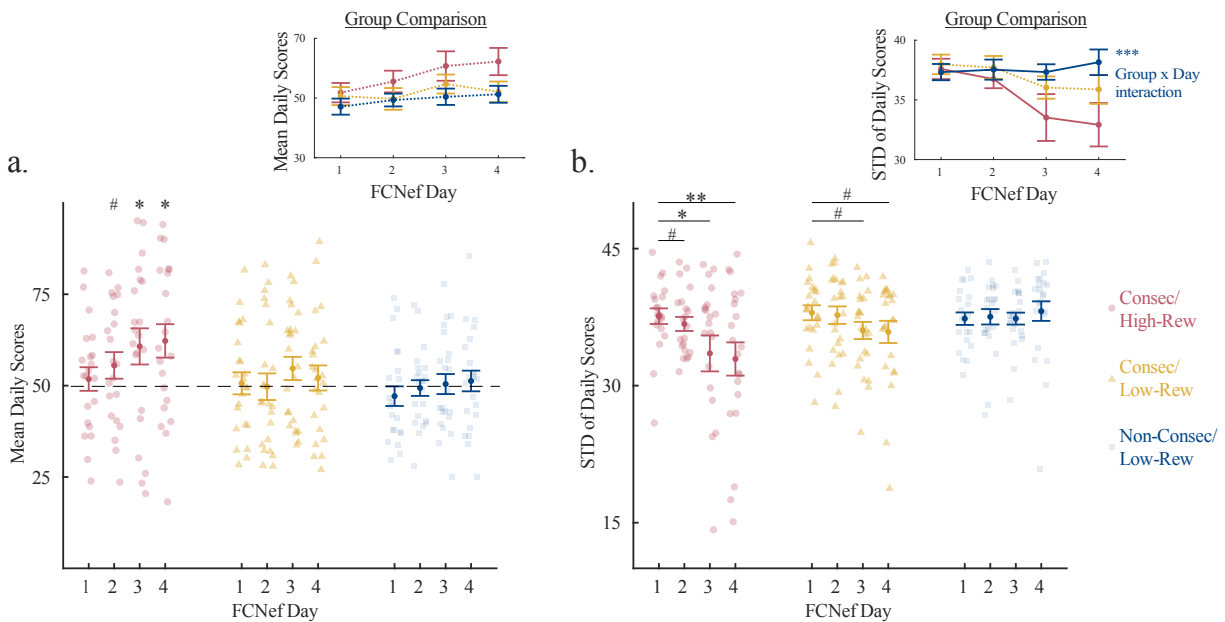


Figure 3. Means and Standard Deviations of FCNef scores

(a) Mean daily FCNef scores. Investigative *t*-tests were conducted separately for each group to examine whether scores on each FCNef day were higher than a baseline score of 50 (which was the average score given during SHAM on Day 0). Scores improved significantly over FCNef days only for the Consec/High-Rew group. The Group Comparison inset shows the mean \pm standard error of mean daily scores overlaid for the different groups. **(b)** Daily STDs in FCNef scores. Investigative *t*-tests were conducted separately for each group to examine whether variance in scores on each subsequent day of FCNef was lower than that on the Day 1 of FCNef. Score variance decreased significantly over FCNef days only for the Consec/High-Rew group, but a similar trend was found for the Consec/Low-Rew group. The Group Comparison inset shows the mean \pm standard error of STD daily scores overlaid for the different groups; This highlights the Group \times Day interaction found in the best-fit model for the Non-Consec/Low-Rew group relative to the reference Consec/High-Rew group. *** represents $p = 0.001$, ** represents $p_{FDR} < 0.01$, * represents $p_{FDR} < 0.05$, # represents $p_{FDR} < 0.1$, STD = standard deviation.

3.2.2. Self-report symptom scores

We analysed symptom questionnaire scores and compared these between the three groups as a secondary measure related to FCNef effects (Supplementary Table 10). We did not include symptom changes from before to after FCNef and into the long-term in our operationalisation of FCNef success because symptom reduction could occur for multiple reasons, including the placebo effect. Symptom reduction would be meaningful here only if specifically related to changes in the targeted brain activity.

FCNef for Precision Psychiatry

Nonetheless, we monitored symptom changes to ensure they had not worsened over the course of the study. Based on preliminary results [12], we predicted that symptoms should decrease from before to after FCNef and then remain lower across post-days. Therefore, we used separate LME models to examine initial and long-term effects.

3.2.2.1. Symptoms: The initial effect

For the best-fit models to predict both general depressive symptoms and brooding symptoms (see Table 2 and Supplementary Tables 11 and 12), we found main effects of first/last FCNef day ($p < 0.0001$ for general depressive symptoms, $p = 0.0003$ for brooding symptoms), but no main effects of group ($ps > 0.05$). Follow-up t-tests showed that these symptoms were lower on day 4 than on day 0 ($t(67) = 4.78$, $p_{FDR} < 0.0001$ for general depressive symptoms; $t(67) = 4.33$, $p_{FDR} < 0.0001$ for brooding symptoms). For the best-fit models to predict anxiety symptoms (see Table 2 and Supplementary Table 13), we found a significant main effect of first/last FCNef day ($p = 0.003$). A follow-up t-test showed that overall, anxiety symptoms were lower on day 4 than on day 0 ($t(67) = 2.95$, $p_{FDR} = 0.007$). In this model there was also a significant main effect of the Non-Consec/Low-Rew group ($p = 0.042$), and a trend for a main effect of the Consec/Low-Rew group ($p = 0.0995$). Compared to the reference Consec/High-Rew group, participants in the Non-Consec/Low-Rew group had higher anxiety and participants in the Consec/Low-Rew group had lower anxiety (on Days 0 and 4) (see Supplementary Table 10). If anxiety has any effect on overall FCNef success, then we should see deviations from the reference group in opposite directions for these two groups, which we did not.

3.2.2.2. Symptoms: Changes in the long-term

Next, we examined whether any post-changes in symptoms differed or remained stable over the long-term. For all symptom types, the best-fit model (see Table 2 and Supplementary Tables 14-17) had no significant main effect of post-day or group ($ps > 0.05$). This may mean that after symptoms decreased from day 0 to day 4, they remained at this new reduced level in the long-term. To examine this possibility, we used t-tests to compare symptoms from follow-up tests with symptoms from day 0. Indeed, we found that relative to symptoms from day 0, general depressive and brooding symptoms from the 1-month and 2-month follow-up tests were significantly reduced ($t(52) = 4.28$, $p_{FDR} = 0.0001$ for general depressive at 1-month, $t(52) = 4.28$, $p_{FDR} < 0.0001$ for brooding at 1-month, $t(45) = 2.24$, $p_{FDR} = 0.015$ for general depressive symptoms at 2-months, $t(45) = 5.60$, $p_{FDR} < 0.0001$ for brooding symptoms at 2-months). We found a similar pattern, but non-significant, for anxiety symptoms ($t(52) = 4.28$, $p_{FDR} = 0.061$ at 1-month, $t(45) = 0.92$, $p_{FDR} = 0.18$ at 2-months). Overall, these results show that general depressive and brooding

FCNef for Precision Psychiatry

symptoms significantly decreased from before to after FCNef and remained at this new reduced level in the long-term. Anxiety symptoms also decreased significantly from before to after FCNef and remained in this same direction in the long-term, albeit not significantly. There was no persuasive evidence that group, and therefore the manipulated parameters, influenced these results.

3.2.3. Resting-state functional connectivity

If FCNef is successful, then we predict that participant rs-FC should become more negative with FCNef, which was the trained direction, and that it should remain so across the post-days. Therefore, we used separate LME models to examine rs-FC initial and long-term effects for the three groups of participants. Note that we measured rs-FC on all days (0-4) of the main experiment. However, we only included data from days 0 and 4 in LME models to examine the initial effect. This is because rs-FC on days 1-3 may be subject to homeostatic and/or compensatory mechanisms, causing overshoots [12] or rebounds [34] in brain activity. Average rs-FC for each group for each day of experimentation can be seen in Supplementary Table 18.

3.2.3.1. rs-FC: The initial effect

Likelihood ratio testing showed that models to predict rs-FC from days 0 and 4 did not differ significantly, depending on whether an interaction term was included. Therefore, we selected the model without the interaction term as best-fit, because it was simpler (see Table 2 and Supplementary Table 19). This model showed a trend for a main effect of first/last FCNef day ($p = 0.094$), but no main effect of group ($ps > 0.05$). Nonetheless, Figure 4 clearly shows that rs-FC on day 4 was more negative relative to baseline for the Consec/High-Rew group, but not for the Non-Consec/Low-Rew group. rs-FC changes from day 0 to day 4 for the Consec/Low-Rew group lay in between those of the other 2 groups (see Figure 4). Evidence for these between-group differences may be found at the LME model level if this experiment is run with greater sample sizes; This is suggested by the fact that the model with the interaction term trended toward being better than the model without, despite this not reaching full significance ($\chi^2(2) = 4.69$, $p = 0.096$). The model with the interaction term had a significant first/last FCNef day x Non-Consec/Low-Rew group interaction ($p = 0.036$) which indicates that the trajectory for rs-FC from day 0 to day 4 differed for the Non-Consec/Low-Rew group compared to the reference Consec/Low-Rew group (see Supplementary Table 20 and for visualisation of this see the Group Comparison inset in Figure 4).

FCNef for Precision Psychiatry

3.2.3.2. rs-FC: Changes in the long-term

We next examined whether any post-changes in DLPFC-PCC rs-FC differed or remained stable over time. In the best-fit model, which had no interaction term (see Table 2 and Supplementary Table 21), no significant main effect of post-day was found. This indicates that changes from baseline remained stable across post-days. A significant main effect of the Non-Consec/Low-Rew group was found ($p = 0.007$), indicating that post-changes in rs-FC differed for the Non-Consec/Low-Rew group and the reference Consec/High-Rew group. Specifically, post-changes were more negative, which was the trained direction, for the Consec/High-Rew group versus the Non-Consec/Low-Rew group (see Figure 4). Post-changes for the Consec/Low-Rew group lay between those of the other two groups (see Figure 4).

FCNef for Precision Psychiatry

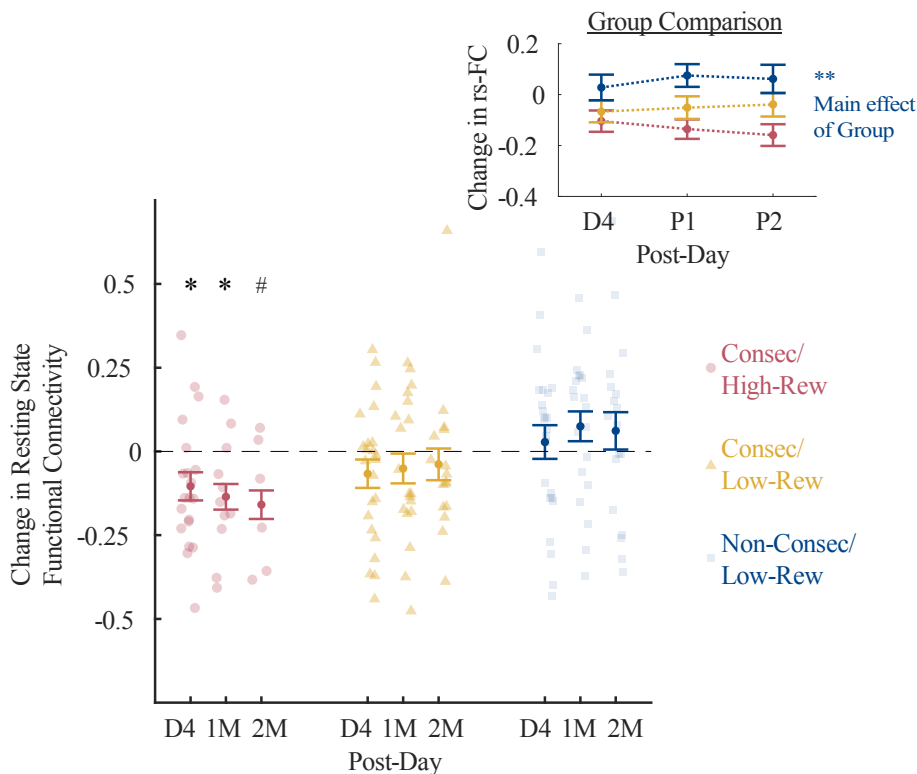


Figure 4. Long-term changes in rs-FC.

Investigative *t*-tests revealed that for the Consec/High-Rew group, overall DLPFC-PCC resting state functional connectivity (rs-FC) was significantly more negative than baseline immediately after FCNef had been completed (D4) and one-month later (M1), and that it trended toward this even two-months later (M2). Nothing of significance was found for either of the other groups, although visually, the rs-FC appears to shift in the non-targeted direction (positive) for the Non-Consec/Low-Rew group. These results should be further explored using larger sample sizes for long-term data. Note that bars for each Group represent different sample sizes because not all participants came back for long-term testing (see Table 1). The Group Comparison inset shows the mean \pm standard error of the change in rs-FC, over different post-days, overlaid for the different groups. Changes = data from each post-day minus data from Day 0; D = Day, M = Month, * represents $p_{FDR} < 0.05$, # represents $p_{FDR} = 0.051$.

3.2.4. Relationship between changes in self-report symptom scores and changes in rs-FC

Finally, in the three groups of participants, we examined how changes in participant DLPFC-PCC rs-FC from before to after FCNef related to changes in general depressive, brooding, and anxiety symptoms. Here, changes were defined as day 0 data subtracted from day 4 data. If the FCNef paradigm

was successful, then we would expect changes in the DLPFC-PCC rs-FC to be positively related to changes in general depressive symptoms. This would mean that the more negative the rs-FC became, the more depressive symptoms decreased. If, as previously hypothesised [12], the targeted functional connection (FC) is specifically related to maladaptive symptoms of rumination, then we would expect changes in the DLPFC-PCC rs-FC to be positively related to changes in brooding symptoms, but not to changes in anxiety symptoms (which we used as a control). Importantly, by including Group as a factor in the models, we examined whether these effects were impacted by manipulated parameters.

3.2.4.1. Relationships between symptom changes and rs-FC changes

The best-fit model to explain changes in general depressive scores (see Table 2 and Supplementary Table 22) had a significant interaction between rs-FC change and group ($p = 0.0001$). Follow-up correlations revealed a significant positive correlation between general depression change and rs-FC change for the Consec/High-Rew group ($r = 0.66$, $p_{FDR} = 0.002$), a positive, but non-significant relationship for the Consec/Low-Rew group ($r = 0.30$, $p_{FDR} = 0.13$), and a negative, non-significant relationship for the Non-Consec/Low-Rew group ($r = -0.41$, $p_{FDR} = 0.98$).

The best-fit model to explain changes in brooding scores (see Table 2 and Supplementary Table 23) showed no significant main effects. However, hypothesis-driven follow-up correlations revealed a significant positive correlation between brooding change and rs-FC change for the Consec/High-Rew group ($r = 0.63$, $p_{FDR} = 0.003$), but nothing even approaching significance for the other two groups ($r = 0.18$, $p_{FDR} = 0.31$ for the Consec/Low-Rew group; $r = 0.05$, $p_{FDR} = 0.40$ for the Non-Consec/Low-Rew group).

The best-fit model to explain changes in anxiety scores (see Table 2) had no significant main effects or interactions ($ps > 0.05$; see Supplementary Table 22). Follow-up correlations also showed nothing of significance ($r = 0.05$, $p_{FDR} = 0.63$ for the Consec/High-Rew group; $r = -0.08$, $p_{FDR} = 0.65$ for the Consec/Low-Rew group; $r = 0.34$, $p_{FDR} = 0.63$ for the Non-Consec/Low-Rew group).

The relationship between symptom changes and rs-FC changes for all groups can be seen in Figure 5. Data of one participant whose general depression change was more than 3 STD lower than the group general depression change mean was excluded from the general depression change analysis (and Figure 5a). Data of another participant whose brooding change was more than 3 STD lower than the group mean was excluded from the brooding change analysis (and Figure 5b). This was because, although inclusion of these participants did not change the results, it meant the data failed to meet a crucial assumption underlying LME models (normal distribution of the residuals).

FCNef for Precision Psychiatry

3.2.4.2. Specificity of the targeted functional connection

We specifically hypothesised that changes in DLPFC-PCC rs-FC from before to after FCNef should relate to changes in brooding, but not anxiety symptoms. Z-tests to compare correlation coefficients [33], run with one tail due to our directional hypothesis, demonstrated a significant difference for the Consec/High-Rew group ($z = 2.08$, $p = 0.019$), but not for the other groups ($z = 0.83$, $p = 0.21$ for the Consec/Low-Rew group; $z = 0.11$, $p = 0.46$ for the Non-Consec/Low-Rew group).

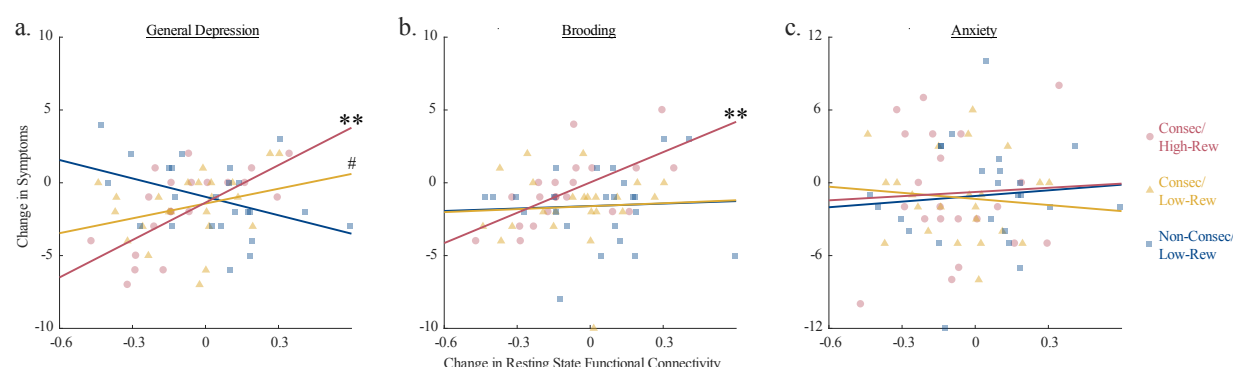


Figure 5. How changes in rs-FC relate to changes in symptomatology.

Changes in DLPFC-PCC resting state functional connectivity (rs-FC) are plotted against (a) changes in General Depression Scores, (b) changes in Brooding scores, and (c) changes in Anxiety scores. Overall, promisingly for precision medicine, the Consec/High-Rew group showed significant positive correlations between changes in rs-FC and changes in *related* (General Depression and Brooding), but not unrelated (Anxiety) symptoms. These effects were in the same direction (reaching a trend with the uncorrected p -value for the General Depression change correlation) for the Consec/Low-Rew group. On the contrary, promising results were not found for the Non-Consec/Low-Rew group, for whom the relationship between rs-FC changes and General Depression score changes were actually numerically in the opposite direction to expectation. ** represents $p_{FDR} < 0.01$, # represents $p_{UNCORR} = 0.085$.

FCNef for Precision Psychiatry

Expected Effects	Consec/ High-Rew	Consec/ Low-Rew	Non-Consec/ Low-Rew
Increase in mean FCNef score	$d = -0.58$	$d = -0.09$	$d = -0.31$
Decrease in FCNef score STD	$d = 0.72$	$d = 0.42$	$d = -0.19$
Normalization of rs-FC	$d = 0.47$	$d = 0.30$	$d = -0.11$
Positive relationship between BDI changes and rs-FC changes	$r = 0.66$	$r = 0.30$	$r = -0.41$
Positive relationship between Brooding changes and rs-FC changes	$r = 0.62$	$r = 0.21$	$r = 0.05$

Large	Medium	Small	Trivial	Trivial	Small	Medium	Large
-------	--------	-------	---------	---------	-------	--------	-------

←
→

Hypothesized direction
Non-hypothesized direction

Table 3: Effect sizes summarized.

“Expected effects” are effects that we expect to see if FCNef training is successful. Comparisons for “Increase in mean FCNef scores” and “Decrease in FCNef score STD” were t-tests comparing data from the first and the last day of FCNef (Days 1 and 4). Comparisons for “Normalization of rs-FC” were t-tests comparing rs-FC from before to after FCNef (Days 0 and 4). The two “Positive relationship...” comparisons were correlations calculated between changes in rs-FC and changes in symptoms, where “changes” were defined as Day 4 - Day 0 data. Effect sizes for each comparison are shown in the relevant cell. These are shown here as Cohen’s d (d) for t-tests and Pearson’s correlation coefficient (r) for correlations. Following convention, these can be described on a scale ranging from trivial ($d < |0.2|$ or $r < |0.1|$), small ($0.2 \leq |d| < 0.5$ or $0.1 \leq |r| < 0.3$), medium ($0.5 \leq |d| < 0.8$ or $0.3 \leq |r| < 0.5$), to large ($d \geq |0.8|$ or $r \geq |0.5|$). Effects in the hypothesized direction are shown in shades of blue and effects in the non-hypothesized direction are shown in shades of orange. The larger the effect size, the stronger the shade of the colour in the relevant cell.

4. Discussion

Overall, we found that the more participant DLPFC-PCC rs-FCs normalised over consecutive days of Functional Connectivity Neurofeedback (FCNef), the greater their corresponding decrease in brooding rumination, which we expected to relate to this functional connection. No such correlation was shown for changes in DLPFC-PCC rs-FC and anxiety, which is thought to relate to different underlying neural circuitry [35,36]. Importantly, here we found these results in new participants (run with

FCNef for Precision Psychiatry

consecutive days of FCNef to be consistent with our past report). Combining this newly collected data with the previously reported data provided us with sufficient statistical power for direct comparison of these correlation coefficients and a significant difference was found. When we looked at data from three groups of participants (see Table 3), we found the most promising results for the group run with a higher-reward schedule to reinforce the targeted shift in functional connectivity, and an experimental schedule with consecutive days. Weaker results were found for the group of participants that completed FCNef over consecutive days, but who were reinforced with a lower reward schedule. FCNef did not seem to have any effect on the group of participants who attended over non-consecutive days and that were reinforced with a lower reward schedule.

4.1. FCNef for precision medicine.

The current results strengthen our previous finding that when FCNef is run over consecutive days, normalisation of a target functional connection relates to a specific reduction in only related symptoms (see Figure 2). This replication of previous results with an independent sample of newly collected data shows their robustness and indicates that previous results were unlikely to have been spurious [12]. Furthermore, the finding that changes in the targeted rs-FC correlated significantly more with changes in related than unrelated symptoms highlights the precision of the FCNef technique. This brings us one step closer to a future in which patients may one day enter a clinic, have their brains scanned, and then have targeted treatment to normalise specific neural aberrations related to their own subset of symptoms.

4.2. The DLPFC-PCC functional connection and rumination.

Not only do our results have implications for precision medicine in general, but also specifically for understanding and treating brooding rumination symptoms. We previously hypothesised, based on both data- and hypothesis-driven evidence from past studies, that the DLPFC-PCC functional connection is likely to relate to brooding rumination [11]. Our initial study found preliminary support consistent with this proposal. Specifically, we found that changes in connectivity between these regions relate to changes in brooding rumination [12]. There has since been at least one other report that also showed increased connectivity between the PCC and PFC related to ruminative symptoms [37]. We here find even stronger support that brooding rumination relates to the DLPFC-PCC functional connection, by showing that the correlation between changes in these is significantly stronger than the correlation between changes in the same functional connection and a type of symptom thought to be unrelated (anxiety). Evidence from

FCNef for Precision Psychiatry

previous studies using repetitive transcranial magnetic stimulation to target the DLPFC [38,39] and using real-time neurofeedback to target the PCC [40], have also shown promising results for amelioration of depressive and brooding rumination symptoms. This could be because targeting these regions affects the functional connection between them, which if true, could mean that targeting the functional connection itself more directly (as we did here) could be of even further advantage.

4.3. Parameter testing.

The current report extends our previous report by clarifying some of the parameters under which FCNef for depression can best be achieved. These results should help guide the design of future neurofeedback and other BMI studies. When selecting parameters for neurofeedback, past studies have tended to follow convention or have gone with what seemed best in terms of cost/benefit trade-offs and/or in terms of making things easy for participants. Often, this is the only feasible way to design a BMI study because the cost of testing all possible parameters is enormous. However, our current results show that certain parameters can make a difference in BMI effectiveness. This means that without knowing the optimal parameters for a given BMI design, researchers may be finding null results simply because they are not running their designs in the most effective way. There is no simple solution to this problem, especially because optimal parameters may differ for different populations, target neural activities, experimental goals, etc. Nonetheless, the current results provide initial evidence that can be used to help future designs. Below, we discuss specific results for these parameter analyses, as well as their implications.

Reward schedule. Participants run with the high-reward schedule had better FCNef success than those run with the low-reward schedule (see Table 3 and Figures 3, 4, and 5). These results support the proposal that external reward might work as reinforcement that is additional to that provided by feedback scores during neurofeedback [41]. Based on these results, we recommend using liberal external reward in future neurofeedback studies. Furthermore, because BMIs generally do not use external rewards for reinforcement, this result might be worthy of consideration beyond the realm of neurofeedback.

Of course, disturbances to reward circuitry and disturbances in reward processing (usually reductions) are commonly reported in depressive and other psychiatric disorders [42–49]. This means that the effect of external reward on reinforcement of the target neural activity might be diminished when neurofeedback is conducted in patients with such disorders. Here, our results with subclinical patients did not corroborate this, but it remains worthy of further investigation in clinically depressed patients.

FCNef for Precision Psychiatry

Experimental schedule. FCNef appears to be more effective when participants come for consecutive, as opposed to non-consecutive, days of FCNef. All expected effects were strongest in the consecutive condition with high reward, in the same direction (albeit with less strength) in the consecutive condition with low reward, and weak or in the opposite direction for the non-consecutive condition (see Table 3). Of course, the non-consecutive condition that we tested was with low reward and it would have been nice to fully balance this by also testing the non-consecutive condition with high reward. While these results are therefore not fully conclusive, they do not appear promising for using non-consecutive days of FCNef. They indicate that, although possibly more tiring for participants, consecutive days of FCNef may be necessary to achieve positive outcomes. It is possible that consecutive days of reinforcement are needed to drive learning effectively and/or that more non-controllable confounding personal circumstances can occur between non-consecutive days of training (an idea that researchers designing future BMIs and clinical treatments ought to consider).

Another point to consider is the possibility that neural plasticity related to learning might cause dynamic rs-FC fluctuations in strength and direction that occur before settling into a new pattern (similar to the rebound effect first documented by Kluetsch et al., 2014 [34]). If so, then our analyses may not have fairly tested consecutive versus non-consecutive conditions. Learning could begin from Day 1; but, post-FCNef measurements (from Day 4, and 1- and 2- months later) differed in the number of days after Day 1 for consecutive/non-consecutive conditions (and even for different participants in the non-consecutive condition). This may mean that measurements were taken at different points during ongoing dynamic rs-FC fluctuations for these different conditions. If so then comparisons between these conditions may actually have compared different snapshots of learning effects. Other researchers using neurofeedback over non-consecutive days should also consider this possibility.

4.4. Limitations of the current design.

One limitation of our study is that it involved participants who had only subclinical levels of depression. Nonetheless, preliminary studies using this FCNef technique with patients diagnosed with MDD have shown promise [19,21]. Results with clinical patients may be improved if the right parameters are employed. The most effective parameter that we found was high(er) monetary reward. We used money because we wanted to test the effects of reward schedule with a type of reward that is well known to strongly activate the human reward system. However, now that proof-of-concept has been provided, this idea should be further tested more creatively with other types of reward that might be more appropriate for a clinical setting. For example, revealing consecutive puzzle pieces for each successful

FCNef for Precision Psychiatry

trial of neuromodulation (see Ramot et al., 2017 [16]). A second limitation of our study is the absence of a control group or within-subject control condition. Therefore, it is possible that our target rs-FC changed and that symptoms improved for reasons such as the placebo or Hawthorne effects. However, only changes in relevant (depressive and brooding rumination, but not anxiety) symptoms changed parallel to the targeted FC, which would be unlikely to occur merely from such nonspecific effects. A third limitation of our study is the incomplete factorial design due to practical constraints, as discussed in the Experimental Conditions section. While this limits our ability to examine potential interaction effects between the experimental schedule and reward schedule parameters, the current design still allows us to investigate main effects of these parameters separately, which was our main aim. Future research should include all factorial combinations to provide a comprehensive understanding of parameter interactions.

4.5. Future directions.

Although different symptoms are likely to arise from aberrations in wider brain networks involving multiple FCs, our current FCNef approach can directly target only one FC. In that sense, connectome-based FCNef [50] or neurofeedback targeting an estimation of the dynamic weighted linear sum of FCs might be more effective. Some promise for such types of neurofeedback has been found, including when targeting an estimation of the dynamic weighted linear sum of FCs from the greater biomarker from which we identified the DLPFC-PCC FC [T. Ogawa, personal communication, 27th January, 2025; 51]. However, the authors have also reported increased difficulty for participants with regard to the credit assignment (they report that it is difficult to target multiple functional connections and to know what actually worked) and overall experimental interpretability [T. Ogawa, personal communication, 27th January, 2025]. Furthermore, FCNef itself affects broader brain networks than just the targeted functional connection anyway [15,16], so it remains possible that our simple FCNef approach might be best at ameliorating symptoms without the need for added complexity and burden for patients. Future studies should attempt to directly compare effectiveness of these types of neurofeedback.

Our current results are promising for precision medicine, but they were shown with functional connectivity in fMRI, which can be costly and impractical (but not impossible) for real clinical treatment. In the future, we expect FCNef to evolve further so that it may be conducted using electroencephalogram (EEG) signatures (see Keynan et al., 2019 [52]) of target FCs or so that it may be conducted using EEG signatures of weighted linear sums of multiple FCs. If successful, then this would allow neurofeedback targeting functional connections to eventually be conducted with portable EEG headsets, possibly even

FCNef for Precision Psychiatry

away from the clinic in the privacy of the patient's own home (for more detailed discussion see Taylor et al., 2021 [53]).

4.6. Conclusion

Overall, we have extended previous results to show that normalisation of the targeted neural network (DLPFC-PCC) correlated significantly more with reductions in symptoms thought to relate to this neural circuitry (brooding rumination) than to changes in symptoms thought to relate to different neural circuitry (anxiety). This highlights the precision of the FCNef technique and brings us one step closer to a future where psychiatric treatment might be tailored to the individual patient. Here, we additionally extended our previous work by investigating parameters under which our FCNef for depression paradigm is most effective. We found that FCNef effectiveness changes depending on those parameters with which it was run. Specifics and implications of some parameter-related results may be relevant beyond neurofeedback to BMIs in general. Furthermore, some of our results highlight benefits of testing conventional parameters. Overall, these results should be informative for design of future BMI testing and for inspiring new interpretations of existing data. For example, previously found null results should be considered in the context of the parameters under which the BMI was run. More broadly, by documenting how parameter optimisation can increase beneficial outcomes and reduce patient burden, we hope to inspire more of this in the future, with the ultimate goal of bringing optimised BMIs to the medical clinic.

Acknowledgements

We thank Kaori Nakamura for help in scheduling and conducting the experiments, Rumi Yorizawa for help in screening participants, and Toshinori Yoshioka for continued support with regard to experimental scripts.

Statement of ethics

Participants all provided written informed consent on each day of screening and experimentation prior to commencement. This research was approved by the Ethics Committee of the Review Board of Advanced Telecommunications Research Institute International, Japan (Ethics No. 132, 172) and by the Kyoto University Certified Review Board (YC0849) and the Committee on Medical Ethics of Kyoto University (C0849). All experiments were performed in accordance with the guidelines and regulations of these Ethics Committees. This research was conducted in association with research registered with the Japan

FCNef for Precision Psychiatry

709 Registry of Clinical Trials (jRCTs052180169) and the University Hospital Medical Information Network
710 Clinical Trials Registry (UMIN000015249).

711 Conflict of interest statement

712 MK is an inventor of patents related to functional connectivity neurofeedback. The original assignee of
713 the patents is ATR, with which the authors are affiliated. We have no other conflicts of interest.

714 Funding Sources

715 This research was supported by the Japan Agency for Medical Research and Development (AMED) under
716 Grant Numbers JP18dm0307008, JP21dm0307102 and JP17dm0107044, by the Japan Society for the
717 Promotion of Science (JSPS) KAKENHI under Grant Number 24K22822, and by the Innovative Science
718 and Technology Initiative under Security Grant Number JPJ004596, ATLA, Japan.

719 Author Contributions

720 JET, TM, TY and MK designed experiments; JET, TO, MM and TM acquired data; JET analysed
721 data; JET prepared the original draft; TO, MM, MT, TY, TK, YK, YY, JM, TM, MK, and AC reviewed
722 and edited the manuscript. All authors gave final approval for submission and agreed to take
723 responsibility for the manuscript.

724 Data accessibility

725 Data and code supporting this study's findings will be publicly available on our GitHub at publication.

726

727

728

729

730

731

732

733

References

- 1 Patel V, Chisholm D, Parikh R, Charlson FJ, Degenhardt L, Dua T, et al. Addressing the burden of mental, neurological, and substance use disorders: key messages from Disease Control Priorities, 3rd edition. *Lancet*. 2016 Apr;387(10028):1672–85.
- 2 Fava M, Davidson KG. Definition and epidemiology of treatment-resistant depression. *Psychiatr Clin North Am*. 1996 Jun;19(2):179–200.
- 3 McIntyre RS, Alsuwaidan M, Baune BT, Berk M, Demyttenaere K, Goldberg JF, et al. Treatment-resistant depression: definition, prevalence, detection, management, and investigational interventions. *World Psychiatry*. 2023 Oct;22(3):394–412.
- 4 Herrman H, Patel V, Kieling C, Berk M, Buchweitz C, Cuijpers P, et al. Time for united action on depression: a Lancet–World Psychiatric Association Commission. *Lancet*. 2022 Mar;399(10328):957–1022.
- 5 Gabriel FC, de Melo DO, Fráguas R, Leite-Santos NC, Mantovani da Silva RA, Ribeiro E. Pharmacological treatment of depression: A systematic review comparing clinical practice guideline recommendations. *PLoS One*. 2020 Apr;15(4):e0231700.
- 6 Schalk G, Brunner P, Allison BZ, Soekadar SR, Guan C, Denison T, et al. Translation of neurotechnologies. *Nat Rev Bioeng*. 2024 May;2(8):637–52.
- 7 The tech: Restore [Internet]. Synchron. 2021 Dec [cited 2023 Oct 12]. Available from: <https://synchron.com/technology/brain-io>
- 8 Neuralink announces first-in-human clinical trial of BCI device [Internet]. [cited 2023 Oct 12]. Available from: <https://www.fdanews.com/articles/211989-neuralink-announces-first-in-human-clinical-trial-of-bci-device?v=preview>
- 9 Paradromics. Paradromics raises \$33 million in funding, achieves breakthrough medical device designation from FDA [Internet]. PR Newswire. 2023 May [cited 2023 Oct 12]. Available from: https://www.prnewswire.com/news-releases/paradromics-raises-33-million-in-funding-achieves-breakthrough-medical-device-designation-from-fda-301827969.html?tc=eml_cleartime

FCNef for Precision Psychiatry

- 760 10 Neurolutions Receives FDA De Novo Market Authorization for IpsiHand™ [Internet]. Neurolutions.
761 2021 Apr [cited 2023 Oct 12]. Available from: [https://www.neurolutions.com/post/neurolutions-](https://www.neurolutions.com/post/neurolutions-receives-u-s-food-and-drug-administration-de-novo-market-authorization-for-ipsihand)
762 [receives-u-s-food-and-drug-administration-de-novo-market-authorization-for-ipsihand](https://www.neurolutions.com/post/neurolutions-receives-u-s-food-and-drug-administration-de-novo-market-authorization-for-ipsihand)
- 763 11 Rustamov N, Souders L, Sheehan L, Carter A, Leuthardt EC. IpsiHand Brain-Computer Interface
764 Therapy Induces Broad Upper Extremity Motor Recovery in Chronic Stroke. medRxiv. 2023 Aug
765 DOI: 10.1101/2023.08.26.23294320
- 766 12 Taylor JE, Yamada T, Kawashima T, Kobayashi Y, Yoshihara Y, Miyata J, et al. Depressive
767 symptoms reduce when dorsolateral prefrontal cortex-precuneus connectivity normalizes after
768 functional connectivity neurofeedback. Sci Rep. 2022 Feb;12(1):2581.
- 769 13 Koush Y, Rosa MJ, Robineau F, Heinen K, W Rieger S, Weiskopf N, et al. Connectivity-based
770 neurofeedback: dynamic causal modeling for real-time fMRI. Neuroimage. 2013 Nov;81:422–30.
- 771 14 Koush Y, Meskaldji D-E, Pichon S, Rey G, Rieger SW, Linden DEJ, et al. Learning Control Over
772 Emotion Networks Through Connectivity-Based Neurofeedback. Cereb Cortex. 2017
773 Feb;27(2):1193–202.
- 774 15 Megumi F, Yamashita A, Kawato M, Imamizu H. Functional MRI neurofeedback training on
775 connectivity between two regions induces long-lasting changes in intrinsic functional network. Front
776 Hum Neurosci. 2015 Mar;9:160.
- 777 16 Ramot M, Kimmich S, Gonzalez-Castillo J, Roopchansingh V, Popal H, White E, et al. Direct
778 modulation of aberrant brain network connectivity through real-time NeuroFeedback. Elife. 2017
779 Sep;6. DOI: 10.7554/eLife.28974
- 780 17 Tsuchiyagaito A, Misaki M, Zoubi OA, Tulsa 1000 Investigators, Paulus M, Bodurka J. Prevent
781 breaking bad: A proof of concept study of rebalancing the brain's rumination circuit with real-time
782 fMRI functional connectivity neurofeedback. Hum Brain Mapp. 2021 Mar;42(4):922–40.
- 783 18 Tsuchiyagaito A, Misaki M, Kirlic N, Yu X, Sánchez SM, Cochran G, et al. Real-Time fMRI
784 Functional Connectivity Neurofeedback Reducing Repetitive Negative Thinking in Depression: A
785 Double-Blind, Randomized, Sham-Controlled Proof-of-Concept Trial. Psychother Psychosom. 2023
786 Jan;92(2):87–100.

FCNef for Precision Psychiatry

- 787 19 Yamada T, Hashimoto R-I, Yahata N, Ichikawa N, Yoshihara Y, Okamoto Y, et al. Resting-State
788 Functional Connectivity-Based Biomarkers and Functional MRI-Based Neurofeedback for
789 Psychiatric Disorders: A Challenge for Developing Theranostic Biomarkers. *Int J*
790 *Neuropsychopharmacol.* 2017 Oct;20(10):769–81.
- 791 20 Zhao Z, Yao S, Li K, Sindermann C, Zhou F, Zhao W, et al. Real-time functional connectivity-based
792 neurofeedback of amygdala-frontal pathways reduces anxiety. *bioRxiv.* 2018 Apr;308924.
- 793 21 Takamura M, Okada G, Kamishikiryo T, Itai E, Kato M, Motegi T, et al. Application of functional
794 connectivity neurofeedback in patients with treatment-resistant depression: A preliminary report.
795 *Journal of Affective Disorders Reports.* 2023 Dec;14:100644.
- 796 22 deCharms RC, Christoff K, Glover GH, Pauly JM, Whitfield S, Gabrieli JDE. Learned regulation of
797 spatially localized brain activation using real-time fMRI. *Neuroimage.* 2004 Jan;21(1):436–43.
- 798 23 deCharms RC, Maeda F, Glover GH, Ludlow D, Pauly JM, Soneji D, et al. Control over brain
799 activation and pain learned by using real-time functional MRI. *Proc Natl Acad Sci U S A.* 2005
800 Dec;102(51):18626–31.
- 801 24 Scharnowski F, Rosa MJ, Golestani N, Hutton C, Josephs O, Weiskopf N, et al. Connectivity
802 changes underlying neurofeedback training of visual cortex activity. *PLoS One.* 2014
803 Mar;9(3):e91090.
- 804 25 Sepulveda P, Sitaram R, Rana M, Montalba C, Tejos C, Ruiz S. How feedback, motor imagery, and
805 reward influence brain self-regulation using real-time fMRI. *Hum Brain Mapp.* 2016
806 Sep;37(9):3153–71.
- 807 26 Grahek I, Shenhav A, Musslick S, Krebs RM, Koster EHW. Motivation and cognitive control in
808 depression. *Neurosci Biobehav Rev.* 2019 Jul;102:371–81.
- 809 27 Beck, A.T., Steer, R.A., & Brown, G.K. Beck Depression Inventory (BDI-II): Manual and
810 Questionnaire. The Psychological Corporation.; 1996.
- 811 28 Treynor W, Gonzalez R, Nolen-Hoeksema S. Rumination Reconsidered: A Psychometric Analysis.
812 *Cognit Ther Res.* 2003 Jun;27(3):247–59.

FCNef for Precision Psychiatry

- 813 29 Hasegawa A. Translation and initial validation of the Japanese version of the Ruminative Responses
814 Scale. Psychol Rep. 2013 Jun;112(3):716–26.
- 815 30 Spielberger CD, Gorsuch RL, Lushene R, Vagg PR. Manual for the State-Trait Anxiety Inventory;
816 Palo Alto, CA, Ed. Palo Alto: Spielberger. 1983
- 817 31 Akaike H. Information theory and an extension of the maximum likelihood principle. In: Csáki
818 BNP&., editor. 2nd international symposium on information theory. Akadémia Kiadó.; 1973; pp
819 267–81.
- 820 32 Benjamini Y, Hochberg Y. Controlling the false discovery rate: A practical and powerful approach
821 to multiple testing. J R Stat Soc. 1995 Jan;57(1):289–300.
- 822 33 Takeuchi RF. Comparison test of two correlation coefficient: corr_rtest(ra, rb, na, nb).
823 2023 Available from: [https://au.mathworks.com/matlabcentral/fileexchange/61398-comparison-test-](https://au.mathworks.com/matlabcentral/fileexchange/61398-comparison-test-of-two-correlation-coefficient-corr_rtest-ra-rb-na-nb)
824 [of-two-correlation-coefficient-corr_rtest-ra-rb-na-nb](https://au.mathworks.com/matlabcentral/fileexchange/61398-comparison-test-of-two-correlation-coefficient-corr_rtest-ra-rb-na-nb)
- 825 34 Kluetsch RC, Ros T, Théberge J, Frewen PA, Calhoun VD, Schmahl C, et al. Plastic modulation of
826 PTSD resting-state networks and subjective wellbeing by EEG neurofeedback. Acta Psychiatr
827 Scand. 2014 Aug;130(2):123–36.
- 828 35 Williams LM. Precision psychiatry: a neural circuit taxonomy for depression and anxiety. Lancet
829 Psychiatry. 2016 May;3(5):472–80.
- 830 36 Williams LM. Defining biotypes for depression and anxiety based on large-scale circuit dysfunction:
831 a theoretical review of the evidence and future directions for clinical translation. Depress Anxiety.
832 2017 Jan;34(1):9–24.
- 833 37 Mısırlı E, Alıcı YH, Kocak OM. Functional connectivity in rumination: a systematic review of
834 magnetic resonance imaging studies. J Clin Exp Neuropsychol. 2023 Nov;45(9):928–55.
- 835 38 Chu SA, Tadayonnejad R, Corlier J, Wilson AC, Citrenbaum C, Leuchter AF. Rumination
836 symptoms in treatment-resistant major depressive disorder, and outcomes of repetitive Transcranial
837 Magnetic Stimulation (rTMS) treatment. Transl Psychiatry. 2023 Sep;13(1):293.
- 838 39 Richieri R, Jouvenoz D, Verger A, Fiat P, Boyer L, Lançon C, et al. Changes in dorsolateral

FCNef for Precision Psychiatry

- 839 prefrontal connectivity after rTMS in treatment-resistant depression: a brain perfusion SPECT study.
840 Eur J Nucl Med Mol Imaging. 2017 Jun;44(6):1051–5.
- 841 40 Kirlic N, Cohen ZP, Tsuchiyagaito A, Misaki M, McDermott TJ, Aupperle RL, et al. Self-regulation
842 of the posterior cingulate cortex with real-time fMRI neurofeedback augmented mindfulness training
843 in healthy adolescents: A nonrandomized feasibility study. Cogn Affect Behav Neurosci. 2022
844 Aug;22(4):849–67.
- 845 41 Watanabe T, Sasaki Y, Shibata K, Kawato M. Advances in fMRI Real-Time Neurofeedback. Trends
846 Cogn Sci. 2017 Dec;21(12):997–1010.
- 847 42 Nestler EJ, Carlezon WA Jr. The mesolimbic dopamine reward circuit in depression. Biol
848 Psychiatry. 2006 Jun;59(12):1151–9.
- 849 43 Russo SJ, Nestler EJ. The brain reward circuitry in mood disorders. Nat Rev Neurosci. 2013
850 Sep;14(9):609–25.
- 851 44 Zhang W-N, Chang S-H, Guo L-Y, Zhang K-L, Wang J. The neural correlates of reward-related
852 processing in major depressive disorder: a meta-analysis of functional magnetic resonance imaging
853 studies. J Affect Disord. 2013 Nov;151(2):531–9.
- 854 45 Baskin-Sommers AR, Foti D. Abnormal reward functioning across substance use disorders and
855 major depressive disorder: Considering reward as a transdiagnostic mechanism. Int J Psychophysiol.
856 2015 Nov;98(2 Pt 2):227–39.
- 857 46 Whitton AE, Treadway MT, Pizzagalli DA. Reward processing dysfunction in major depression,
858 bipolar disorder and schizophrenia. Curr Opin Psychiatry. 2015 Jan;28(1):7–12.
- 859 47 Keren H, O’Callaghan G, Vidal-Ribas P, Buzzell GA, Brotman MA, Leibenluft E, et al. Reward
860 Processing in Depression: A Conceptual and Meta-Analytic Review Across fMRI and EEG Studies.
861 Am J Psychiatry. 2018 Nov;175(11):1111–20.
- 862 48 Knowland D, Lim BK. Circuit-based frameworks of depressive behaviors: The role of reward
863 circuitry and beyond. Pharmacol Biochem Behav. 2018 Nov;174:42–52.
- 864 49 Fox ME, Lobo MK. The molecular and cellular mechanisms of depression: a focus on reward

FCNef for Precision Psychiatry

- 865 circuitry. Mol Psychiatry. 2019 Dec;24(12):1798–815.
- 866 50 Scheinoist D, Hsu TW, Avery EW, Hampson M, Constable, RT, Chun MM, Rosenberg MD.
867 Connectome-based neurofeedback: A pilot study to improve sustained attention. NeuroImage. 2020
868 May;15(212):116684.
- 869 51 Ichikawa N, Lisi G, Yahata N, Okada G, Takamura M, Hashimoto R-I, et al. Primary functional
870 brain connections associated with melancholic major depressive disorder and modulation by
871 antidepressants. Sci Rep. 2020 Feb;10(1):3542.
- 872 52 Keynan JN, Cohen A, Jackont G, Green N, Goldway N, Davidov A, et al. Electrical fingerprint of
873 the amygdala guides neurofeedback training for stress resilience. Nat Hum Behav. 2019 Jan;3(1):63–
874 73.
- 875 53 Jessica Elizabeth Taylor, Itamar Jalon, Toshinori Chiba, Tomokazu Motegi, Mitsuo Kawato, and
876 Talma Hendler. Chapter 12: Translation to the clinic and other modalities. In: Hampson M, editor.
877 fMRI Neurofeedback. Academic Press, Elsevier; 2021; pp 265–86.
- 878 54 Kirchner WK. Age differences in short-term retention of rapidly changing information. J Exp
879 Psychol. 1958 Apr;55(4):352–8.

Group	Main Experiment Sample Size	1-Month Follow- up Sample Size	2-Month Follow- up Sample Size
Consec/High-Rew	21	11	9
Consec/Low-Rew	23	20	17
Non/Low-Rew	24	22	20
Total	68	53	46

Table 1. Sample sizes for three groups of participants.

This table shows the sample sizes for: (1) participants run in consecutive days of FCNef with the high-reward schedule (the “Consec/High-Rew group”), (2) those run in consecutive days of FCNef with the low-reward schedule (the “Consec/Low-Rew group”), and (3) those run over non-consecutive days of FCNef with the low-reward schedule (the “Non-Consec/Low-Rew group”). No participants were run over non-consecutive days of FCNef with the high-reward schedule (no “Non-Consec/High-Rew” group). Sample sizes are shown for the main experiment and for one- and two-month follow-up tests. There were fewer participants for the follow-up tests for the Consec/High-Rew group because the long-term tests were not included in the earliest stages of this experiment, so only 12 participants from this group were invited back.

Analyses	Formulae	IV1	IV2	Random Intercept	AICs	
					+	x
FCNef Scores	Mean FCNef Score	~ FCNef Day	+ or x Group	+ (1 Subject)	2109.2	2108.7
	STD FCNef Score	~ FCNef Day	+ or x Group	+ (1 Subject)	1599.8	1593
Symptoms	General Depressive Scores	~ first/last FCNef Day	+ or x Group	+ (1 Subject)	776.72	779.13
	Brooding Scores	~ first/last FCNef Day	+ or x Group	+ (1 Subject)	681.4	682.68
	Anxiety Scores	~ first/last FCNef Day	+ or x Group	+ (1 Subject)	913.86	914.62
	General Depressive Score Changes (D4, 1M, 2M)	~ Post-Day	+ or x Group	+ (1 Subject)	926.03	925.45
	Brooding Score Changes (D4, 1M, 2M)	~ Post-Day	+ or x Group	+ (1 Subject)	766.01	769.92
	Anxiety Score Changes (D4, 1M, 2M)	~ Post-Day	+ or x Group	+ (1 Subject)	1095.7	1095
rs-FC	rs-FC	~ first/last FCNef Day	+ or x Group	+ (1 Subject)	-22.99	-23.67
	rs-FC Changes (D4, 1M, 2M)	~ Post-Day	+ or x Group	+ (1 Subject)	-58.77	-55.47
Symptom Change/ rs-FC Change	General Depressive Score Changes (D4)	~ rs-FC Change	+ or x Group	+ (1 Subject)	316.57	-153.29
	Brooding Score Changes (D4)	~ rs-FC Change	+ or x Group	+ (1 Subject)	287.8	287.52
Relationship	Anxiety Score Changes (D4)	~ rs-FC Change	+ or x Group	+ (1 Subject)	408.46	410.45

Table 2. The models used to examine dependent variables from the FCNef experiment.

Models with and without interactions between independent variables (IVs) were compared to see which would best predict each dependent variable (DV). Akaike Information Criteria (AIC) are displayed in columns labelled '+' (for models without interactions) and 'x' (for models with interactions). These are highlighted in bold in cases in which likelihood ratio testing showed the corresponding model to be significantly better fit than the alternative model. If there was no significant difference, then the model without the interaction was selected as best-fit because it was the simplest. FCNef Day = Days 1-4; Subject = experimental participant; STD = standard deviation; First/last FCNef Day = Days 0 and 4; Post-Day = Day 4, and the 1- and 2-month follow-up test days; Changes = data from the day indicated in brackets (e.g. D4) minus data from Day 0; rs-FC = resting state functional connectivity between the DLPFC-PCC.

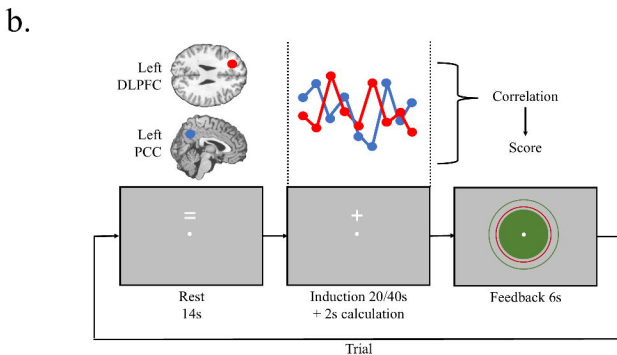
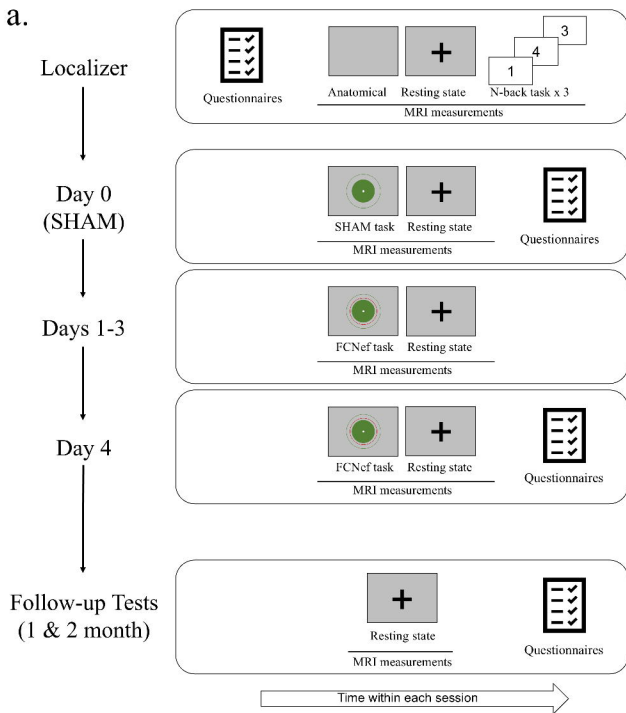
Expected Effects	Consec/ High-Rew	Consec/ Low-Rew	Non-Consec/ Low-Rew
Increase in mean FCNef score	$d = -0.58$	$d = -0.09$	$d = -0.31$
Decrease in FCNef score STD	$d = 0.72$	$d = 0.42$	$d = -0.19$
Normalization of rs-FC	$d = 0.47$	$d = 0.30$	$d = -0.11$
Positive relationship between BDI changes and rs-FC changes	$r = 0.66$	$r = 0.30$	$r = -0.41$
Positive relationship between Brooding changes and rs-FC changes	$r = 0.62$	$r = 0.21$	$r = 0.05$

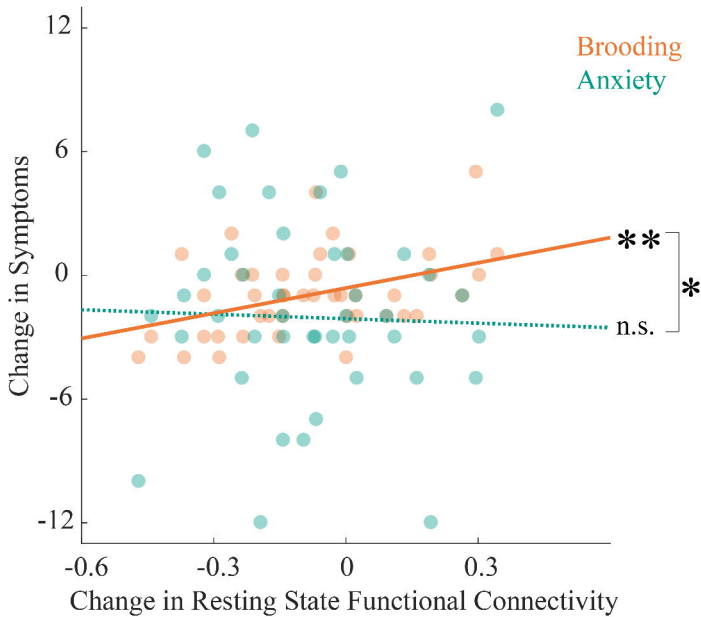
Large	Medium	Small	Trivial	Trivial	Small	Medium	Large
-------	--------	-------	---------	---------	-------	--------	-------

← Hypothesized direction
Non-hypothesized direction →

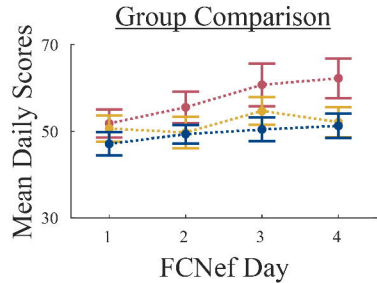
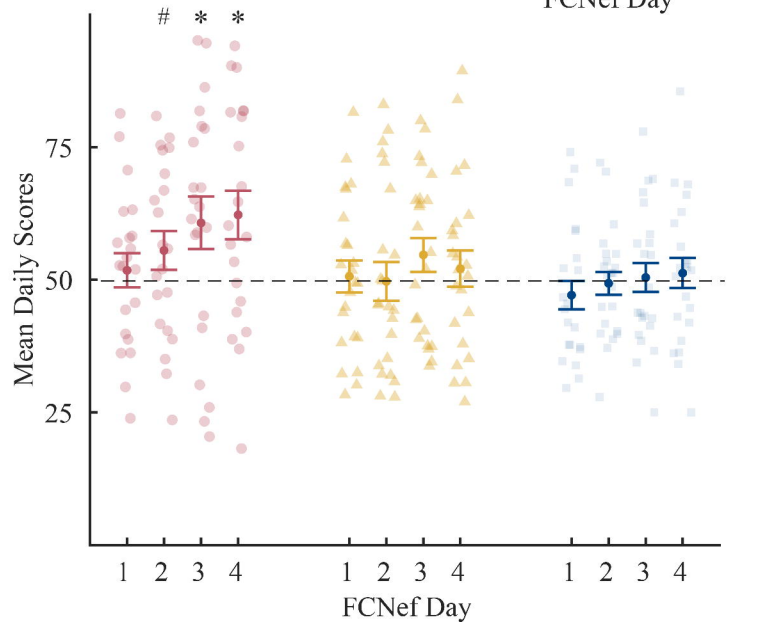
Table 3: Effect sizes summarized.

“Expected effects” are effects that we expect to see if FCNef training is successful. Comparisons for “Increase in mean FCNef scores” and “Decrease in FCNef score STD” were t-tests comparing data from the first and the last day of FCNef (Days 1 and 4). Comparisons for “Normalization of rs-FC” were t-tests comparing rs-FC from before to after FCNef (Days 0 and 4). The two “Positive relationship...” comparisons were correlations calculated between changes in rs-FC and changes in symptoms, where “changes” were defined as Day 4 - Day 0 data. Effect sizes for each comparison are shown in the relevant cell. These are shown here as Cohen’s d (d) for t-tests and Pearson’s correlation coefficient (r) for correlations. Following convention, these can be described on a scale ranging from trivial ($d < |0.2|$ or $r < |0.1|$), small ($0.2 \leq |d| < 0.5$ or $|0.1| \leq r < |0.3|$), medium ($|0.5| \leq d < |0.8|$ or $|0.3| \leq r < |0.5|$), to large ($d \geq |0.8|$ or $r \geq |0.5|$). Effects in the hypothesized direction are shown in shades of blue and effects in the non-hypothesized direction are shown in shades of orange. The larger the effect size, the stronger the shade of the colour in the relevant cell.





a.



b.

